



We are hiring!

Graduate civil and structural engineers

Smith and Wallwork is looking for enthusiastic engineers who are passionate about construction to join our Cambridge office.

Smith and Wallwork was founded in 2012 to work on interesting construction projects. We collaborate with some of the UK's best architects to design exceptionally high-quality buildings, often requiring complex and innovative structural solutions.

Our passion for engineering is matched by our concern for the environment.

Our work has been recognised through RIBA, RICS, IStructE and Wood Award commendations and success. Our new Library for Magdalene College recently won the prestigious 2022 RIBA Stirling Prize.

As a graduate engineer you will join our civil or structural engineering team working on a range of high-quality projects across the UK. Our focus is to deliver low embodied carbon buildings by applying our specialisms in timber design and Passivhaus detailing. Smith and Wallwork also carries out research and have partnered with Cambridge University on numerous projects, with academic papers being presented at world conferences.

**smithandwallwork
engineers**

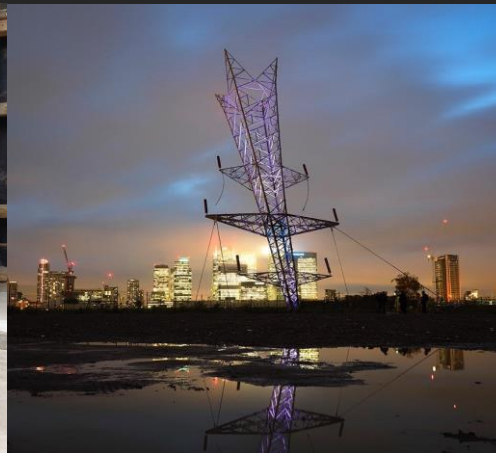




The New Library – Stirling award winner
Níall McLaughlin Architects
Magdalene College, Cambridge



Engineering Department
Grimshaw architects
University of Cambridge



A Bullet From a Shooting Star
Alex Chinneck



Master's Field Development
Níall McLaughlin Architects
Balliol College, Oxford



Botanic Gardens Rising Path
Chadwick Dryer Clarke Architects
Cambridge Botanic Gardens



Stephen Perse Foundation School
Chadwick Dryer Clarke Architects
Cambridge



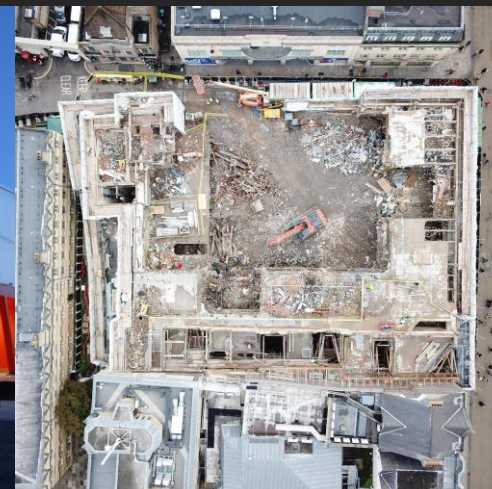
New Pavilion
Níall McLaughlin Architects
Isle of Wight



Lucy Cavendish College
R H Partnership Architects
Cambridge



Barkarby School Sweden
Liljewall arkitekter
Jarfalla kommun



Northgate House
MICA Architects
Jesus College, Oxford

**smithandwallwork
engineers**

Meet our Graduates

Panayiotis Papastavrou

(him/he)

I first joined Smith and Wallwork for a summer placement in 2012, at the end of my 3rd year at university. I then joined as a graduate engineer after graduating from the University of Cambridge in 2013.

During my placement I developed the company's in-house specialist design software for timber elements for which there were limited resources publicly available. This gave me a good understanding of the company's aspirations, which is to be at the forefront of future technologies and sustainable development.

What I find exciting about working at Smith and Wallwork is the variety and high quality of the projects that we work on. On every project there is the opportunity to apply prior experience to develop new designs efficiently as well as bespoke new challenges that keep the work engaging. In addition, I find that being involved in the day-to-day direction of the projects from conception to construction working through the whole lifecycle, from a technical perspective as well as from a management and commercial aspect, provides a fulfilling sense of ownership and understanding of the build process.

In addition, I am really pleased to have the opportunity to be involved in the research and development of novel engineering systems, running research projects with the University of Cambridge, testing and breaking elements in the lab, and applying the results to real projects.

Some of my most treasured experiences so far were presenting our research findings at the World Conference on Timber Engineering in Vienna in 2016, passing my professional review to become a chartered engineer in 2018, alongside helping younger engineers progress through their training and seeing them enjoy more and more responsibility.

For anyone looking to start their career at Smith and Wallwork I would advise that here, you will feel an integral part of the team working on the delivery of real projects from the start, with the freedom to take ownership of your work as well as being supported through your career progression.



Freya Williams

(she/her)

I joined in September 2019 as a Graduate Structural Engineer after graduating from the University of Sheffield where I studied Structural Engineering and Architecture. I also completed a 6-week summer placement at Smith and Wallwork in 2017.

I joined Smith and Wallwork as I wanted to work for a company that focused on low material/low carbon design, with a passion for timber engineering. I had seen some of the Smith and Wallwork hand sketches in design guides during my studies and wanted to be able to work with people who have similar beliefs my own.

One of the most exciting parts of my role is going to my construction sites and seeing my early sketches and concept designs being built and becoming a reality. Having a say in the direction of my projects and challenging design decisions at the early stages, such as the upfront carbon emissions of the materials selected, means I get to bring real value and benefit to projects.

One of the standout moments for me since joining Smith and Wallwork is seeing my first project, a CLT Passivhaus residential block for Lucy Cavendish College, which I had worked on since RIBA Stage 2, being constructed and completed within the first three years of my career.

I also completed the detailed design of an exposed oak glulam frame for Clare College in a world heritage site, working closely with the architects, designing and sketching over 500 no. traditional timber carpentry connections. The frame has now been constructed and looks fantastic!

The one bit of advice I would give a recent graduate is to make sure you join a company where you get the opportunity to work on your dream projects. The kind that you can get excited about every day and that brings new challenges, so that no day is the same. Look for a company that gives you as many opportunities to be involved in all aspects of the design... including getting your hands dirty on-site!



smithandwallwork
engineers

Applications

Send your application and covering letter to:
recruitment@smithandwallwork.com

The deadline for applications is 16th of Dec 2022.

We will aim to respond to all applicants in January 2023 notifying them if they have made it to the interview stage of the application process.

We look forward to receiving your application.

What we offer:

- Competitive salary.
- 25 days annual leave and bank holidays.
- Pension contributions.
- Staff insurance scheme.
- Enrolment on ICE accredited training scheme.
- Payment of professional Institution subscriptions.
- Cycle-to-work scheme.
- Opportunity to be involved in research projects working with the University of Cambridge.



Smith and Wallwork is committed to encouraging equality, diversity and inclusion amongst our workforce, and eliminating unlawful discrimination.

Based on the number of applications received, we reserve the right to close applications early. Please feel free to contact us if you have any further questions:

recruitment@smithandwallwork.com

50 St Andrews Street, Cambridge, CB2 3AH

Tel: +44(0)1223 750249

www.smithandwallwork.com



smithandwallwork
engineers